

WHOLEHOG® III

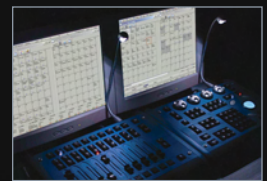
ultimate lighting control with
legendary Wholehog 3
operating system



WHOLEHOG III CONSOLE



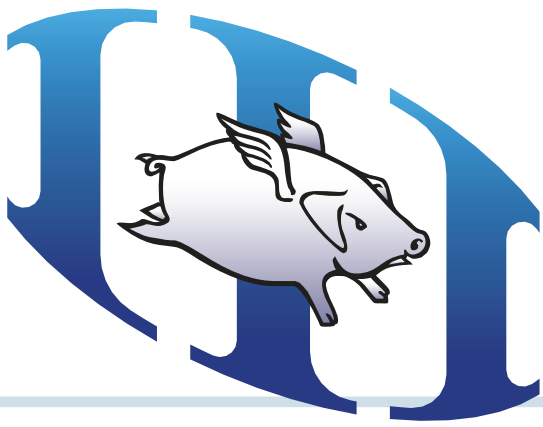
HOG iPC CONSOLE



HOG 3PC SOFTWARE

3 PRODUCTS,
1 ROBUST
OPERATING
SYSTEM





WHOLEHOG

ultimate lighting control console



Two large high-brightness color touchscreens, with adjustable viewing angle

Backlit trackball with configurable buttons (4) for cursor and position control

Playback faders (10) with familiar playback controls (Choose, Go, Pause & Flash)

Custom-designed embedded electronics—does not use a standard computer motherboard

Supports two external monitors (VGA/SVGA)—can be touchscreens

Direct connection to several standard visualization packages

Virtually silent operation—no fans

Internal hard disk drive, ZIP drive and re-writable CD-ROM drive

MIDI Input and Output supports MIDI Show Control and MIDI Time Code

Universal Serial Bus ports (2) for printer and Wholehog III accessories

Audio stereo line in and out, with two internal speakers

Realtime clock

Desklights, feedback LEDs and LCD backlighting all dimmable

Designed for easy maintenance

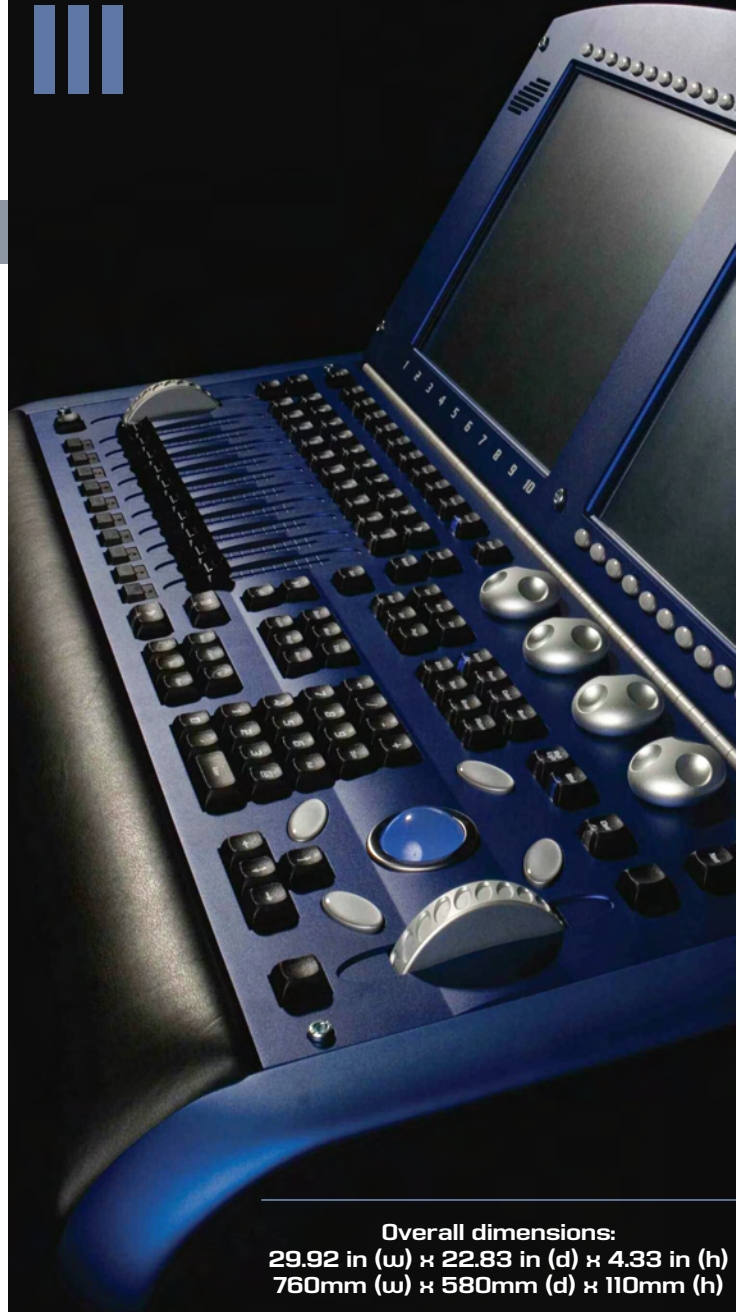
Auto-ranging mains input (90-250 VAC)

Power-fail protection (internal battery) prevents data loss on power fail

Console construction of precision-machined aluminum, with a tough wear-resistant anodized finish

Sturdy roadcase included

ONE UNIFIED



Overall dimensions:
29.92 in (w) x 22.83 in (d) x 4.33 in (h)
760mm (w) x 580mm (d) x 110mm (h)

Wholehog® 3 offers programmers significant advances in console technology, whether you're using conventional, automated or digital lighting products. With the perfect blend of style and function, the Wholehog III streamlines operations, lowers costs and opens new creative doors.



ED OPERATING SYSTEM

HOG iPC

the ultimate hybrid console



Hog® iPC™ is a small, mid-range controller which is designed to use the Wholehog 3 operating system while also being backward compatible with the classic Wholehog II operating system for maximum flexibility. The 'i' stands for its integrated PC motherboard operating via Windows XP Embedded.

Hog iPC uses four universes of DMX output direct from the console, expandable to eight universes using USB DMX Widgets or a USB DMX Super Widget. Includes two 12-inch high-brightness color touchscreens with adjustable viewing angle. Hog iPC can be expanded with a third monitor, and use of DP and IOP for unlimited DMX outputs.

CONNECTIVITY

Supports USB Playback Wings and USB Expansion Wings

DP and IOP compatible

MIDI Input, Output and Thru supports MIDI Show Control and MIDI Time Code

Single Linear Time Code input via 3 pin female XLR connector

Direct connection to several standard visualization packages

Wired and wireless networking ability with multiple Hog 3PC computers, Hog iPC and Wholehog 3 console systems

Hog 3PC software is standard operating system. Backward compatible with Hog 2PC software for maximum flexibility (some specifications or features may not be available when using Hog 2PC version)

Supports third monitor or touch screen

Simple Configuration Panel functions allow quick switching between Hog 3PC and Hog 2PC software

Integrated roadcase included



Overall dimensions:
29.74 in (w) x 15.33 in (d) x 4.93 in (h)
755mm (w) x 389mm (d) x 125mm (h)



FOR ALL 3 PRODUCTS

HOG 3PC

create your own control solution



CONNECTIVITY

Offline editor for the Wholehog 3 system and Hog iPC console

DMX Output using USB DMX Widgets and/or USB DMX Super Widgets

DP and IOP compatible

Supports USB programming wing and multiple USB playback and expansion wings

MIDI In/Out via PC's sound card

Linear Timecode (LTC) Input Widget provides SMPTE input capabilities

Direct connection to several standard visualization packages

Wired and wireless networking ability with multiple Hog 3PC computers, Hog iPC, and Wholehog 3 console systems

REMOTE FOCUS

Hog 3PC software is compatible as a Remote Focus device for Wholehog 3 consoles, rack mount units, Hog iPC consoles and other Hog 3PC computers

Provides freedom to operate all console functions from any location without the burden of cables.

HOG 3PC MINIMUM SYSTEM REQUIREMENTS

Windows® XP (Home or Professional) with SP2 or greater

Intel Pentium III compatible processor at 1 GHz or higher

256 MB of RAM

200 MB hard-disk space

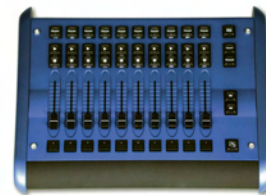
1024 x 768 or higher-resolution monitor

Hog® 3PC transfers the functionality of the Wholehog® 3 console to your personal computer. Hog 3PC offers a cost effective and flexible suite of software and hardware components that combine to produce the system that you need; from the free-of-charge Hog 3PC software through to an unlimited number of DMX channels.

HARDWARE

Playback Wing

- 10 faders with playback controls
- Integrated 2 port USB hub
- Rugged, high quality control surface
- Bi-color dimmable LED feedback
- Bi-color LED desklight
- USB or PSU (supplied) powered




Programmer Wing

- 4 encoders, trackball and programming controls
- Integrated 2 port USB hub
- Rugged, high quality control surface
- Main playback controls
- Bi-color LED desklight
- USB or PSU (supplied) powered




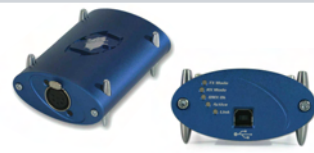
Super Widget

- 4 DMX universes in one Widget
- DMX512-1990/A compliant
- RDM compatible
- Kensington Security Slot 




DMX Widget

- DMX512-1990/-A compliant
- RDM compatible
- USB powered
- Kensington Security Slot 



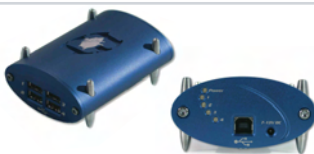
Timecode Widget

- Balanced audio LTC input
- Film, EBU, NTSC & SMPTE
- Timecode status LEDs
- USB powered
- Kensington Security Slot 



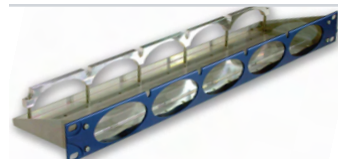
USB Hub Widget

- Rugged 4 port USB hub
- USB or PSU (supplied) powered
- Ideal for use in Rack Adaptor (below)



1U Widget Rack Adaptor

- Rackmounts 5 Widgets
- 4.5" deep
- Wholehog 3 rack unit styling



- Control
- Fixture Idle
- Fixture Lock
- Fixture Shutdown
- Fixture Display off
- Fixture Display on
- Fixture Global Reset
- Lamp Strike
- Lamp Douse

Control menu

WHOLEHOG III OPERATING SYSTEM

Takes lighting control to new levels of sophistication and simplicity.

Generic Library model provides consistent control interface for all fixtures, regardless of manufacturer or type

Change Fixture function allows exchange of fixture types even after a show has been programmed

Quick function to add new fixtures that replicate existing programming

Personalities for all major automated fixture types in built-in library

Fixture Builder function allows custom library creation

Calibrated color picker allows seamless color-matching between different fixture types and with gels and dichroics

Multiple fanning methods aid when creating complex looks

Powerful customizable real-time effects, with independent timing

Fully customizable playback controls on the console, and optionally on multiple playback wings

Cuelists and Scenes can be executed directly from the touchscreens for extra flexibility

Inhibitive intensity masters can be defined for any group of fixtures

Chases have fully adjustable direction, crossfade percentage, and rate

Tap Sync feature for chases

Cues and Scenes can be triggered manually, or via a wide variety of automated triggers including timecode and MIDI Show Control from one or multiple sources

User definable wheelsets allow customization of parameter layouts

Online help system, including onscreen reference manual. Available in multiple languages

Up to 8192 multi-parameter fixtures

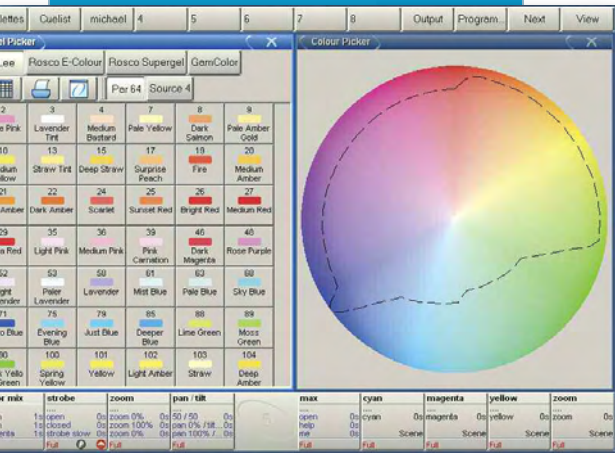
No fixed number of DMX universes — can be expanded with additional Wholehog 3 DMX Processors

System supports up to 65,536 cues, cuelists, scenes and pages

Unlimited number of concurrent crossfades and effects, running in an unlimited number of concurrent executing cues and cuelists

Backup show data to ZIP disk or CD-ROM — can be scheduled to occur automatically

Easy upgrades of system software and library from CD-ROM or ZIP



Gel and Color Picker



Gel Picker provides quick access to common color mixing values

Instant access to fixtures, groups and palettes via touch-screen displays, and familiar command line syntax

Intuitive viewing and editing of all programming through powerful spreadsheet displays

Direct connection to several visualization packages including ESP Vision, WYSIWYG, MSD, and Capture software on a networked PC

Free visualizer dongle with every Wholehog 3 console!

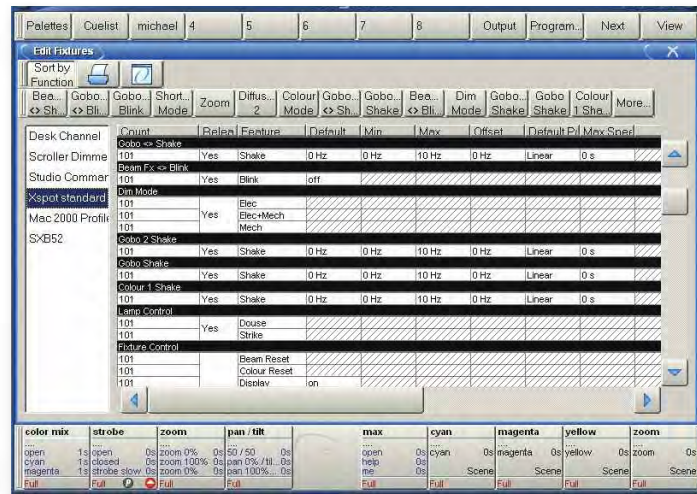
Multi-level Undo/Redo

Cues, Scenes and Palettes can reference other palettes for fast and easily updated programming

Unlimited control of timing, with the ability to set individual in and out delay and fade times, as well as crossfade paths, for each parameter of every fixture

Timing information can be stored in palettes

Grouping and Buddying features allow complex fixture selections through quick toolbar functions



Learn Timing feature for quick programming with timecode

Cuelists selectable in tracking and non-tracking mode

Virtual fader repositioning provides all the features of motorized faders with none of the drawbacks

Advanced graphic user interface, with emphasis on a clean and easy-to-use operating environment and a high degree of user configurability

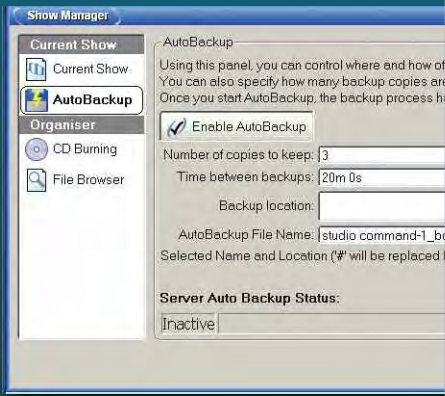
User preferences can be exported and imported from the console separately from the show

Network components can be configured and upgraded remotely

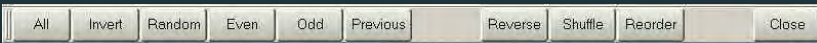
Console uses robust Linux OS

Ethernet connection allows communications with Hog 3PC computers, Hog iPC and Wholehog 3 console systems.

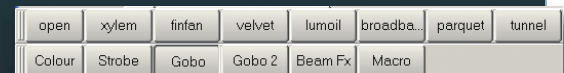
Remote Focus functionality is available when networked with a computer running Hog 3PC software.



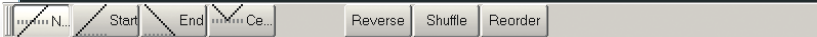
AutoBackup



Select toolbar



Slot toolbar

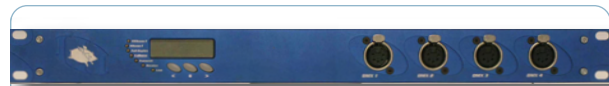


Fan toolbar

HARDWARE

WHOLEHOG III OPERATING SYSTEM

These accessories enhance any of the Wholehog 3 operating systems products—Wholehog 3 console, Hog 3PC.



DMX PROCESSOR

- 4 DMX Universes (2048 channels)
- LCD and buttons for local user configuration
- Independent processing of crossfades and effects
- Fixture Talkback and RDM ready
- No limit on number present in a system
- 1U 19" rack unit, only 4.5" deep
- Automatically updates software in sync with console



MIDI/TIMECODE PROCESSOR

- MIDI in, thru and out
- System can support multiple units on the network
- LTC (balanced audio) input and output
- Automatically updates software in sync with console
- VITC (composite video) input and output
- LCD and buttons for local user configuration
- All timecode formats supported: SMPTE, Film, EBU (PAL/SECAM), NTSC
- Video genlock and burn-in window supported
- 1U 19" rack unit, only 4.5" deep



RACKMOUNT CONTROL UNIT

- 1U 19" Rack control unit for playback applications
- Direct replacement for console where user interaction not required
- Back panel connections as console: Ethernet, 2 monitors, MIDI, USB, PS2
- Re-writable CD-ROM drive for software update and show backup
- 2 USB ports on front panel for easy connection of accessories
- Supports USB programming and playback wings

TIMECODE WIDGET

- Balanced audio LTC input
- Film, EBU, NTSC & SMPTE
- Timecode status LEDs
- USB powered
- Kensington Security Slot



EXPANSION WING

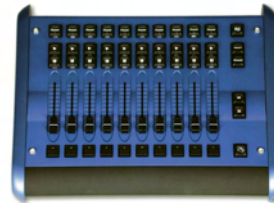
- 40 available playbacks:
 - 20 masters with faders and playback controls
 - 20 faderless masters with playback controls
- High brightness LCD panels display playback information
- Master playback controls with enable/disable feature
- Rugged, high quality control surface
- Integrated 2 port USB hub
- Sturdy roadcase included



EXTERNAL TOUCHSCREEN



- 17.0" diagonal Active Matrix TFT
- AccuTouch Five-Wire Resistive Technology
- USB connection to console



PLAYBACK WING

- 10 faders with playback controls
- Integrated 2 port USB hub
- Rugged, high quality control surface
- Bi-color dimmable LED feedback
- Bi-color LED desklight
- USB or PSU (supplied) powered



PROGRAMMING WING

- 4 encoders, trackball and programming controls
- Integrated 2 port USB hub
- Rugged, high quality control surface
- Main playback controls
- Bi-color LED desklight
- USB or PSU (supplied) powered

HIGH END SYSTEMS

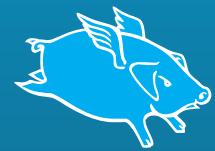


HIGH END SYSTEMS, INC.

2105 Gracy Farms Lane
Austin, Texas 78758 USA
sales@highend.com
www.highend.com

Austin: 1.512.836.2242
Los Angeles: 1.818.947.0550

©2006 High End Systems, Inc.
All specifications subject to change
without notice. 063106



ENJOY YOUR FLIGHT

Specifications subject to change without notice. Certain specifications may be the result of future software releases. For a complete list of the issued patents and patents pending contact High End Systems.



WHOLEHOG III

ultimate lighting control with
legendary Wholehog 3
operating system